

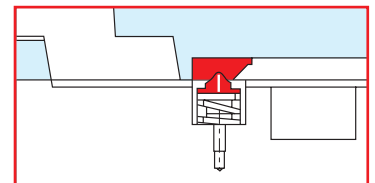
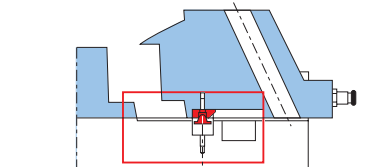
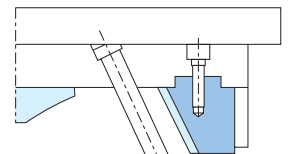
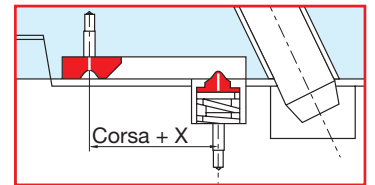
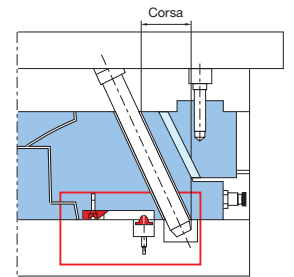
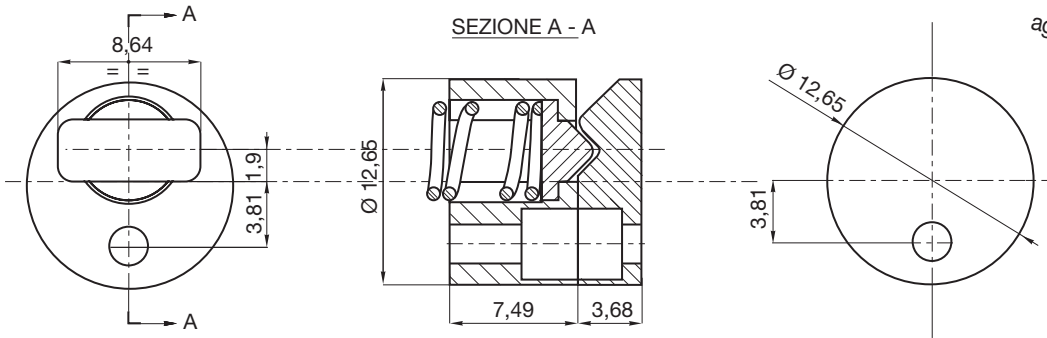


**Tenuta Kg.3,5**

Corsa + X = Corsa + 0,5 / 0,75  
Viti di fissaggio M2

**SR 035**

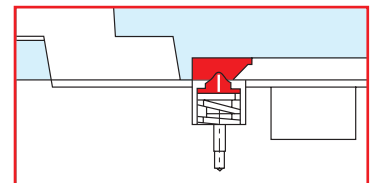
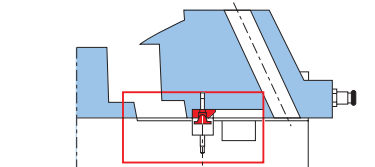
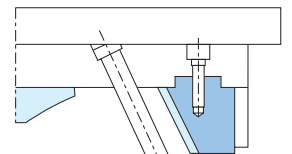
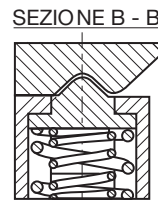
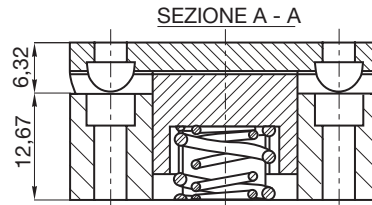
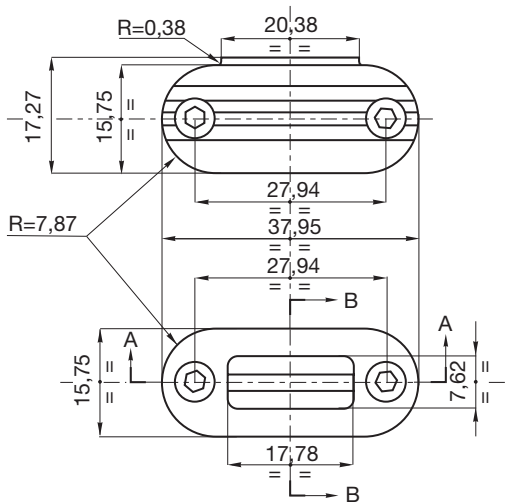
**X**  
**EXTRA CORSA DI SICUREZZA**  
indica la quota di sicurezza, che in aggiunta alla corsa, permette al fermo "SR" di bloccare ancora il carrello



**Tenuta Kg.11**

Corsa + X = Corsa + 1,25 / 1,90  
Viti di fissaggio M3

**SR 11**



**Tenuta Kg. 22**

Corsa + X = Corsa + 0,65 / 1,25  
Viti di fissaggio M6

**SR 22**

