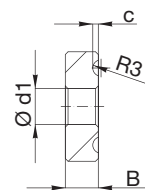
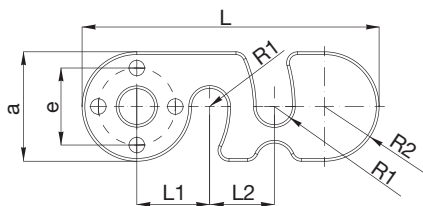
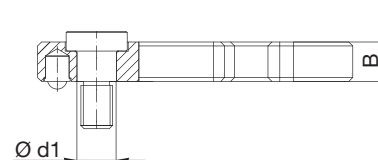
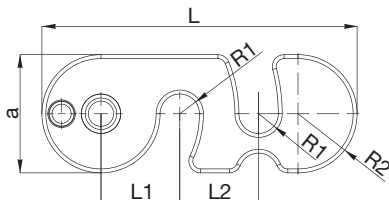


Tipo
1 / 2 / 6 / 10



Tipo 3

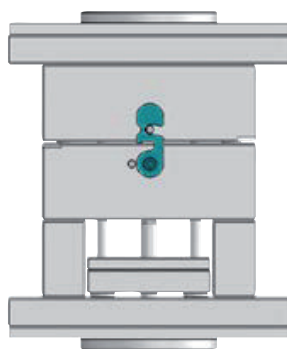


Mat. 1.0037
~ 350 N/mm²

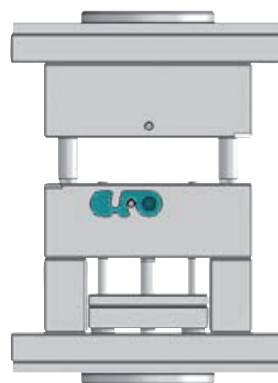
a	B	c	d1	e	L	L1	L2	P (kN)	R1	R2	R3	Tipo
20	6	1	6,5	14	54	13,25	11,75	9,8	3,3	10	2	1
30	10	2	9	20	80	20	20	17,6	5	15	2,5	2
			10	2,5							3	
50	16	2	13	34	130	31,5	30	58,8	6,5	25	2,5	6
60	20		17,5	40	190	38,75	80	100	8,75	30	2,5	10

Esempio d'ordine: Tipo = 6 → PKCLOSE-6

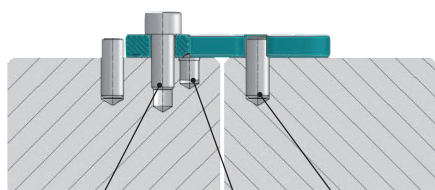
MONTAGGIO



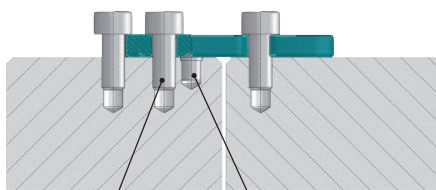
STAMPO CHIUSO



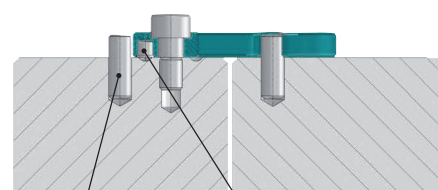
STAMPO APERTO



Tipo 1: S11 M6x16 PRM 5 S09 6x20
 Tipo 2: S11 M8x25 PRM 6 S09 8x30
 Tipo 6: S11 M12x40 PRM 6 S09 12x45
 Tipo 10: S11 M16x50 PRM 6 S09 16x55



Tipo 1: S11 M6x16 PRM 5
 Tipo 2: S11 M8x25 PRM 6
 Tipo 6: S11 M12x40 PRM 6
 Tipo 10: S11 M16x50 PRM 6



Tipo 3: S098x30 PRM 6