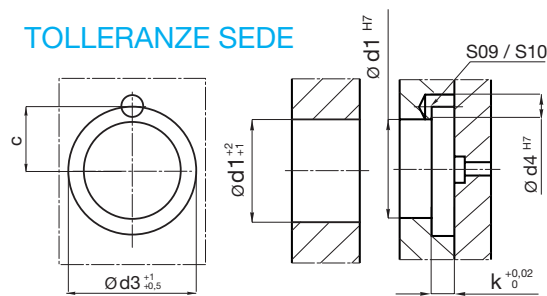


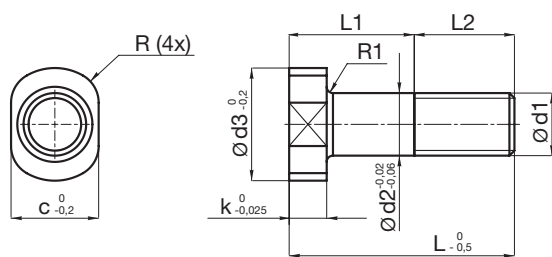
TOLLERANZE SEDE



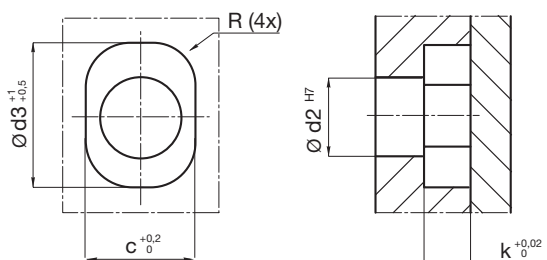
Mat. 1.7131

c	d1	d2	d3	d4	k	L	L1	R	
13	18	M10	26	6	6	45	25	0,5	
						55	30		
14	20	M12	28	6	8	45	35	1	
						65			50
17,5	26	M16	35	6	8	100	50	1	
						65			
						100			
20	30	M20	40	6	8	65	45	1	
						100	50		
						65	45		
23	36	M24x1,5	46	6	8	100	50	1	
						65	45		
						100	50		

Esempio d'ordine: d1 = M12 L = 65 → IFT/2-M12x65



TOLLERANZE SEDE



Mat. 1.2312

c	d1	d2	d3	k	L	L1	L2	R	R1
11	M8	8	14	6	28	16	12	5	0,5
14	M10	10	18		26	11	15		
					31	15	16		
					36	20			
16	M12	12	22	6	35	15	20	5	0,5
					40	20			
					45	25			
					54	34			
22	M16	16	28	8	51	25	26	5	0,5
					60	34			
					70	44			

Esempio d'ordine: d1 = M16 L = 70 → IFT/3-M16x70